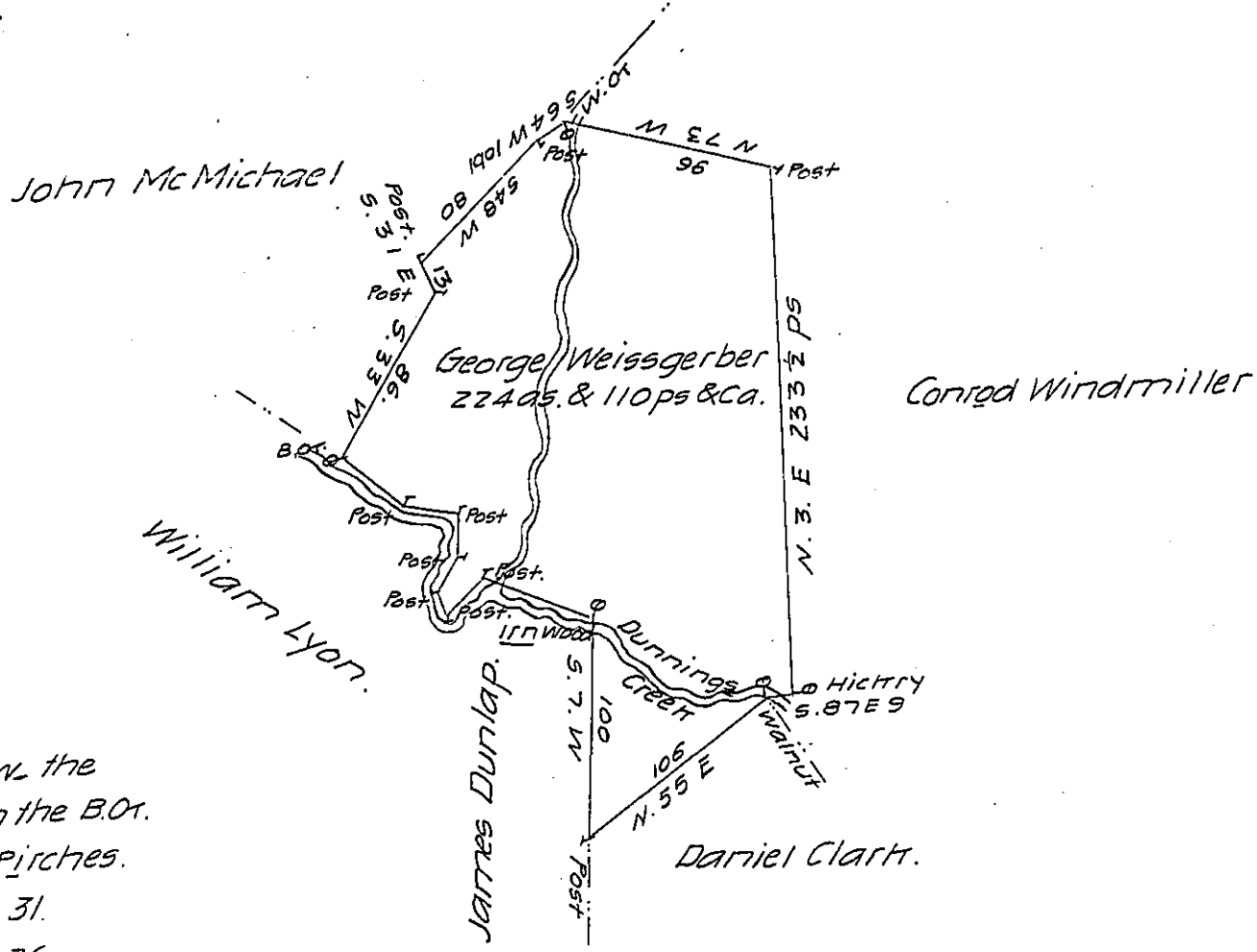


FORM NO. 1.



Courses down the  
Creek from the B.O.

Pirches.

- S. 45. E. 31.
- S. 84. E. 26.
- S. 1. W. 17.
- S. 34. W. 22
- S. 16. E. 11.
- S. 49. E. 26.
- S. 60. E. 55 ps.

188. Down Dunning's Creek

A Draught of a tract of land Situate on Dunning Creek Bedford  
County joining Capt Trent Col<sup>o</sup> Armstrong, James Dunlap & ca. Contain-  
ing Two hundred and Twenty four acres & 110 Ps & the usual allowance  
of Six P. Cent & ca. Surveyed the ninth day of January ~~the 9th~~ 1791.  
In pursuance of an order of survey dated the 20th day of October 1766.  
No. 1602. George Woods D.S.

Daniel Brodhead Esqr. S. G.

January 16th 1793. examined & found to be correct

George Woods Jr. D.S.

IN TESTIMONY that the above is a copy of the original remaining on file in  
the Department of Internal Affairs of Pennsylvania, made  
comformably to an Act of Assembly approved the 16th day of  
February 1833, I have hereunto set my hand and caused  
the Seal of said Department to be affixed at Harrisburg,  
this ~~twenty fourth~~ day of June 1907

*Henry Howell*  
Secretary of Internal Affairs.